

**Sarah Blackler**

Developing Plans for Greaves Park  
An Evolutionary Process



Lancaster  
Union Workhouse

JOHN O'GAUNT HILL WARD

HILL

Drill Ground

Greaves House

Whalley's Farm

Greaves Farm

Rose Cottage

Branton House

D

S

CANTON MARKET

White Cross

Moore Place

Moorside Parcel Ground

Moorside

UNION WORKHOUSE

UNION WORKHOUSE

UNION WORKHOUSE

UNION WORKHOUSE

UNION WORKHOUSE

UNION WORKHOUSE

UNION WORKHOUSE

UNION WORKHOUSE

UNION WORKHOUSE

UNION WORKHOUSE

UNION WORKHOUSE

UNION WORKHOUSE

UNION WORKHOUSE

UNION WORKHOUSE

Lodge

170

245

245

590

167

165

245

247

590

165

250

251

590

255

254

259

590

256

257

590

258

590

259

260

590

261

262

590

263

264

590

265

266

590

267

268

590

269

270

590

271

272

590

273

274

590





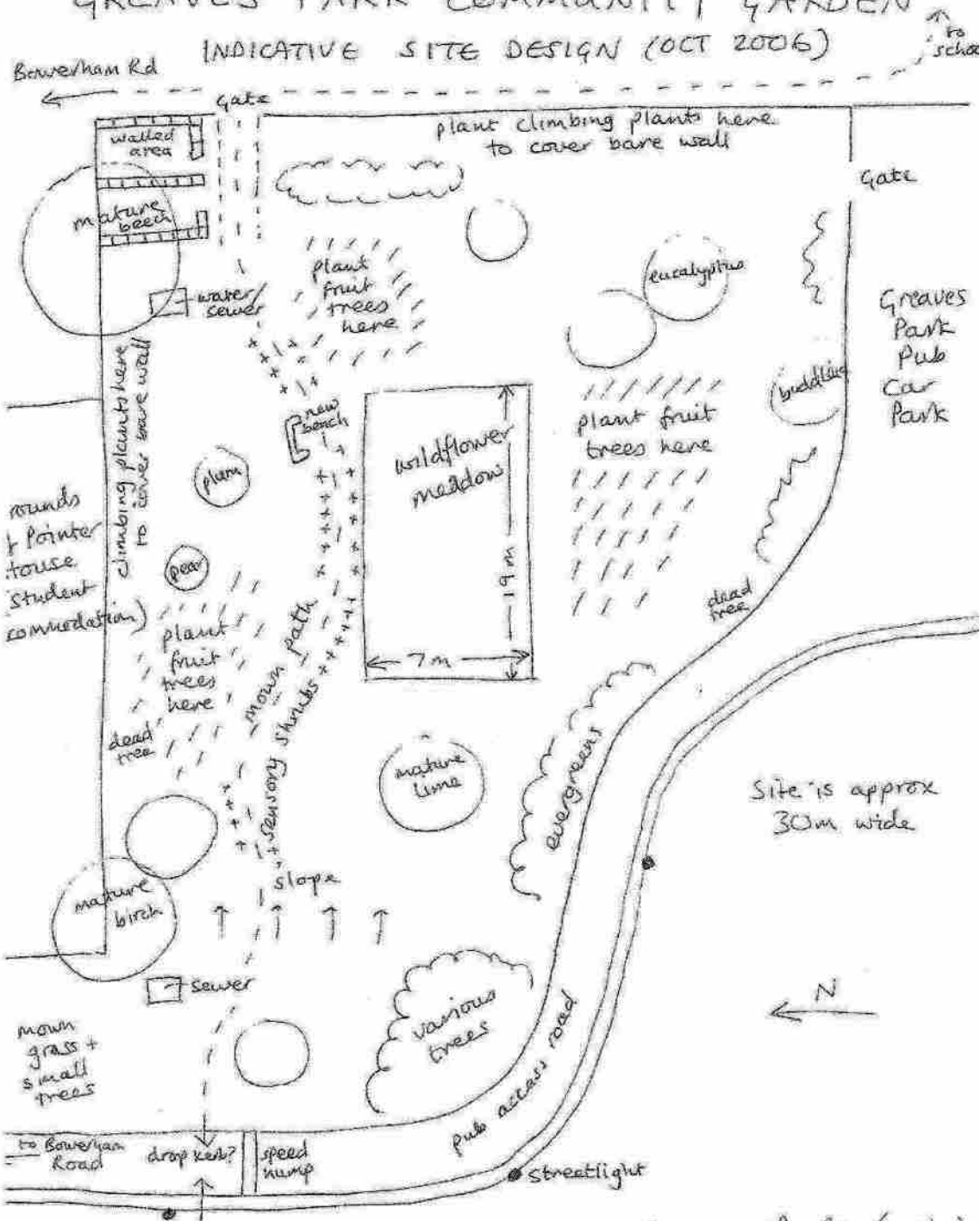
Sketch Map of the Greaves Park

# Greaves Park Concept Plan



# GREAVES PARK COMMUNITY GARDEN

INDICATIVE SITE DESIGN (OCT 2006)



Greaves Park (main)

# Short Vision Statement

- To make The Greaves Park a lovely tranquil place for people of all ages to visit, to play, to relax, and to enjoy the trees, the green spaces, the flowers, and the wildlife.
- To protect and encourage the natural environment.
- To preserve and improve the network of paths which provide a green and peaceful route through and around the park.
- To build links with the local community and to raise awareness of all that the park can offer

## Long Vision Statement

We consider The Greaves Park to be a hidden gem full of green spaces, wonderful trees, and lovely green paths from which to enjoy the park and the views over the city to the Cumbrian Fells. Much of the park cannot be seen from the roads that pass by it, and many people are not aware of the extent of the park or its many aspects. Our vision is to make the public more aware of the park and to encourage people to come in and enjoy it in all its variety.

We also aim to protect and enhance the many features that make The Greaves Park so special. These include:

The opportunities for children and families to play, and to enjoy the semi-wild parts of the park.

The network of green paths in the park which provide a green and peaceful route through and around the park.

The beautiful trees in the park, and the spring flowering bulbs. We also hope to encourage more flowering plants, both for their beauty and for their benefit to wildlife.

The rich variety of wildlife. Our vision is to protect and encourage the ecological variety in the park by protecting the various wildlife habitats, and the peace and tranquillity of the wilder parts of the park.

The views over the city and Morecambe Bay and the Cumbrian Fells. Our vision is to provide one or more high clearings from which to enjoy the views over the city and the Morecambe Bay area at their best

# IDEAS FOR “MASTERPLAN” 2014

Consider park to be

- (a) traditional parkland with mown grass, and specimen trees both native and decorative foreign varieties
  - (b) play area(s) for children
  - (c) the community garden with fruit trees, wild flower meadow, and other bee friendly plants
  - (d) more natural areas of rough grass, wild flowers and native trees
  - (e) Small areas of woodland.
  - (f) Banks of flowering bulbs, currently seriously overgrown with brambles in places
- Manage and plant each area according to its individual character

- 3) Manage brambles, raspberries, nettles and rhododendrons to allow other plants and trees to flourish, and to keep the paths clear. [Add Thistles, Dock, Hogweed?]  
If Rhododendron ponticum remove all specimens.  
Consider strimming or mowing rough grass annually after wildflowers have cast their seed.
- 4) Support wildlife with e.g. nestboxes, refuges for small mammals, “insect hotels”, and bird, small mammal and insect friendly planting, esp bee friendly. Also a pond for wildlife (out of reach of small children)
- 5) Maintain paths in a useable state all year round.  
Make useable path from Greaves Road to the “Hole in the Wall” to provide access for parents and children attending Bowerham School  
Clear route of Victorian Path and build steps at the southern end to connect to the middle grass path
- 6) Provide benches and waste bins at strategic points
- 7) Make path to a Viewpoint in SE corner of park, to provide the best possible view over the city and the bay
- 8) Provide signs welcoming people to the park, making them aware of the extent of the park. Also making people aware of the work of the FOGP and inviting them to join
- 9) Other notices encouraging people to put litter in bins and pick up dog poo
- 10) Provide play opportunities/play areas for older children e.g. adventure play equipment, woodland events, wild areas to explore
- 11) Make links with local community groups e.g. scout troops, schools, and involve them in projects in the park
- 12) Make use of free offers where appropriate e.g. free fruit trees from Green Spaces, Incredible Edibles, free hedging/copse trees from Woodland Trust
- 13) Make an Arboretum in the park to enhance the environment and the enjoyment of the public

# Action Plan for each area identified within the park

The group have split the park up into easily identifiable areas. These are different in character and make-up, and the intention is that each area will be treated differently. This will add interest to the park and split it into more manageable tasks for maintenance.

- Formal Play
- Community Garden
- Informal play
- Victorian Path
- Middlewood
- Viewing Area
- Wider Park
- Beech Woods
- Wildlife Ponds
- General Actions for Group



# Views of suggested changes to the park

**Score = Strongly agree + Agree ratings, minus Disagree + Strongly disagree ratings.**

- **More wildflowers** 119
- **Encourage wildlife** 116
- **Restore Community Garden** 103
- **Restore Victorian path** 99
- **Upgrade path up Crocus Hill** 88
- **Develop trees (arboretum)** 85
- **Create viewing area** 84
- **Areas for children's informal play** 83
- **Develop wildlife pond** 64
- **Introduce signage** 58

# Plan for Community Garden Jan 2016

## Summary

- **Improve accessibility**
- **Encourage wild flowers**
- **Encourage wild life**
- **Reduce predominance of potentially invasive plants**
- **Look after existing trees, including fruit trees**

## General

Signpost Community Garden to make public aware of access opportunity  
Woodchip all paths to maintain accessibility at all times of the year  
Keep grass down at path edges to encourage biodiversity

## At edge of driveway

- 1 Remove diseased Horse Chestnut next to the driveway to help prevent the spread of *Pseudomonas syringae*
- 2 Remove scrubby sycamore to give more space for *Griselinia*
- 3 Clear miscellaneous seedlings trees in same area
- 4 Keep Hawthorn and perhaps in future layer it as cover for wildlife
- 5 Make willow hedge in front of area between Conifer and Birch to delineate edge of Community Garden. Leave a gap for the footpath to pass through

## Left hand path

- 6 Clear path with herbicide and lay woodchip
- 7 Remove nettles with herbicide and replant with wild flower seed
- 8 Pollard willow which is currently falling low over the path and is likely to collapse. Cut above the graft to allow growth of new shoots.
- 9 Cut back brambles and spot-weed regrowth
- 10 Where we planted wild flowers last year - spot-weed
- 11 Leave some thistles near wall to provide seeds for Goldfinches
- 12 Plant pear trees against wall to screen the building behind

- 14 Reduce Rosebay Willowherb. Herbicide once basal rosettes are showing.

## Triangle between paths

- 14 Plant bulbs under Lime tree
- 15 Remove Greater Willowherb. Herbicide once basal rosettes are showing

## Single path to back entrance - LHS

- 16 Remove plum suckers
- 17 Make 1.2m circles around younger fruit trees to assist new growth
- 18 Remove brambles on LHS but leave approx 2m from wall
- 19 Keep this area of grass short except where wild flowers are present
- 20 Mow grassy area several times between when the wild flowers have set seed and mid January.
- 21 Behind *Pyracantha*-*Plum*-*Choisya* - keep brambles under control
- 22 Under Beech remove seedling trees
- 23 Cover contents of compost bin 2 with large plastic sheet.

## Single path to back entrance - RHS

- 24 Tidy from end of railings to *Prunus padus*
- 25 Clear all brambles in front of apple trees
- 26 In same place, long term: plant vigorous wild flowers
- 27 Level the path to apple trees where there are large bumps (trip hazard esp when path is overgrown in summer)
- 28 Cut back Dogwood to encourage new growth
- 29 Mow wild flower area several times between when the wild flowers have set seed and mid January.

## Right Hand Path from Driveway

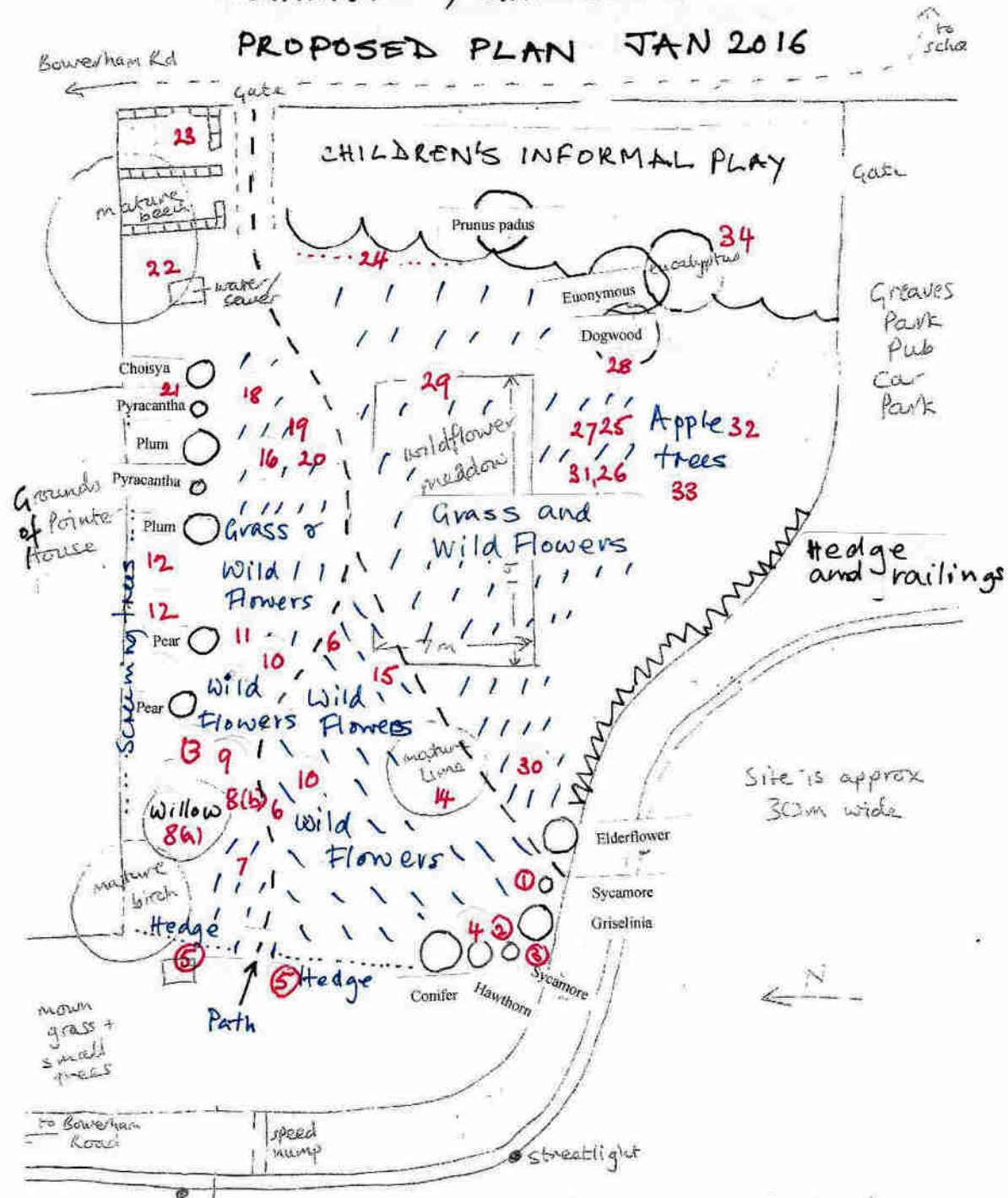
- 30 Remove Willowherb on RHS of path

**This suggested work programme is designed to encourage biodiversity maintain present species and to encourage the use of the space, and to create a welcoming space for users of the park.**

**NB Left Hand and Right Hand refer to position on entering Community Garden from the driveway to the pub**

# COMMUNITY GARDEN

## PROPOSED PLAN JAN 2016



Greaves Park (main)

# Community Garden Work Plan 2016

## General

Task	When?	Comments
Signpost Community Garden to make public aware of access opportunity		Funding
Woodchip all paths to maintain accessibility at all times of the year	Sept/Oct	Need woodchips
Keep grass down at path edges to encourage biodiversity	Monthly starting late March - late Sept	
Coppice self-seeded birches and sycamores where appropriate	Nov - March	
Make meandering paths to provide alternative routes through	When we have woodchips	
Plant fruit bushes around selected fruit trees	Oct-Feb	Funding or Incredible Edibles?
Circle of logs for children to sit on	When logs available	LCC?
Introduce scheme for families to "Adopt a Tree"	Needs more discussion	Publicity

## At edge of driveway

1) Remove diseased Horse Chestnut next to the driveway to help prevent the spread of Pseudomonas syringae	Soon	LCC?
2) Remove scrubby sycamore to give more space for Griselinia	Soon	
3) Clear miscellaneous seedlings trees in same area	Soon	
4) Keep Hawthorns and perhaps in future layer them as cover for wildlife	Nov- Jan	
5) Make willow hedge in front of area between Conifer and Birch to delineate edge of the Community Garden . Leave a gap for the footpath to pass through. Mulch Use rooted slips or cuttings	Oct-Nov	Funding for rooted Willow or David can get cuttings for free

## Left Hand Path

6) Clear path with herbicide and lay woodchips	next few weeks	Requires certificated operative
7) Remove nettles with herbicide and replant with wild flower seed	next few weeks	Requires certificated operative. David has seeds

8(a) Pollard Willow which is currently falling low over the path and is likely to collapse. Cut above the graft to allow growth of new shoots. Leave one branch for swinging on	Very soon	LCC Ask LCC to check branch for safety
8( b) Plant a fruit tree in the gap made by removing overhanging Willow branch - see Item 33	November	
9) Cut back brambles (or maybe mattock them out) and spot-weed regrowth	End of April	Requires certificated operative
10) Where we planted wild flowers last year - spot-weed.	End of March	Requires certificated operative
11) Dig out thistles where we planted wild flowers last year. Leave some thistles near wall to provide seeds for Goldfinches	Done	
12) Plant pear trees against wall to screen the building behind (funding)	November	Funding? Or via local group(s)
13) Reduce Rosebay Willowherb. Herbicide once basal rosettes are showing, or maybe strim.	late March	Requires certificated operative
37) Birch seedling in wall, in danger of damaging wall - investigate who can remove it - suggest cut it out and ecoplug	Soon	Ask LCC

### **Triangle between paths**

14) Plant bulbs under Lime tree - snowdrops, crocus, bluebells. Suggest buy native bluebells.	Done	Funding for bluebells
15) Remove Greater Willowherb. Herbicide once basal rosettes are showing	End of March	Requires certificated operative

### **Single path to back entrance - LHS**

16) Remove plum suckers	March onwards	
17) Make 1.2m circles around younger fruit trees to assist new growth.	Now	
18) Remove brambles on LHS but leave approx 2m from wall	Ongoing	
19) Keep this area of grass short except where wild flowers are present	Ongoing	
20) Mow grassy area several times between when the wild flowers have set seed and mid-January.	Sept - mid Jan	
21) Behind Pyracantha-Plum-Choisya - keep brambles under control, but preserve some to provide cover for the Blackcaps	Ongoing	
22) Under Beech remove seedling trees	Any time	

23) Cover contents of compost bin 2 with large plastic sheet.	Now onwards	
38) Shorten long branches onPlums	Second week of July	
39) Move 2 pear trees to this area	November	

### Single path to back entrance - RHS

40) Remove badly deformed cherry	Any time	
24) Tidy from end of railings to Prunus padus	Ongoing	
25) Clear all brambles in front of apple trees	Ongoing	
26) In same place, long term: plant vigorous wild flowers	May	Funding
27) Level the path to apple trees where there are large bumps (trip hazard esp when path is overgrown in summer) - now suggest reroute path slightly to avoid disturbing yellow ants	Any time when we have woodchip	
28) Cut back Dogwood to encourage new growth.	March	
40) Dig up some of the Snowdrops where they are obscured by Dogwood and replant them further forward, or under Lime tree	When still green	
29) Mow wild flower area several times between when the wild flowers have set seed and mid January.	Sept - mid Jan	
31) Prune Buddleia	March Done	
32) Maybe prune Apple trees	Nov and July	
33) Where three Pear trees are growing too close together move one or two to a more appropriate position, maybe to the gap left by removing overhanging branch of Willow tree - see item 8(b)	Wait till space is available	
34) Keep an eye on the Eucalyptus as there may be a danger of branches falling	Ongoing and esp after stormy weather	
35) Prune willow shoots from small tree	Done	
36) Prune Victoria Plum in shade	July	

### Right Hand Path from Driveway

30) Remove Willowherb on RHS of path	late March	Requires certificated operative
--------------------------------------	------------	---------------------------------

## Suggestions for General Ongoing Work May 2016

<b>Task</b>	<b>When?</b>	<b>Comments</b>
Wood-chipping paths	Sept/Oct or later if ground is dry	Maybe Payback Team can help?
Clearing of brambles on bank behind Parkfield to expose the bulbs Herbicide to prevent regrowth	After bulbs have finished	Requires certificated operative
Dig up crocus bulbs from wood-chipped paths on crocus hill and replant	Springtime, when visible	
Fallen branches: Consider value for natural play Otherwise cut up and make wildlife refuges.	Any time	
Tree care including a) removing diseased or broken branches, b) removing self-seeded trees too close to other trees, 3) crown raising and 4) removing unnecessary tree guards.	Any time Any time Any time Any time	Limits as per Helen's instructions
Litter picks	Any time but winter is good for visibility	
Strim or mow 1-2 metre edges to grass paths on Parkfield side	Once a month during summer if possible	
Make natural barrier between Victorian Path and Horseman's Cottage - perhaps using self-seeded hollies	Oct/Nov	
Put down tree trunks to protect grass opposite South Lodge	Done	LCC
Repair benches	ASAP	LCC but may be a problem with experienced staff
Strim grass against wall opposite South Lodge to prepare for bulb planing	Soon	